

# CERTIFICATE OF LOCATION OF GOVERNMENT CORNER

NORTHWEST Corner of Section 07, Township 107N, Range 43W

5th Principal Meridian, State of Minnesota, County of Murray

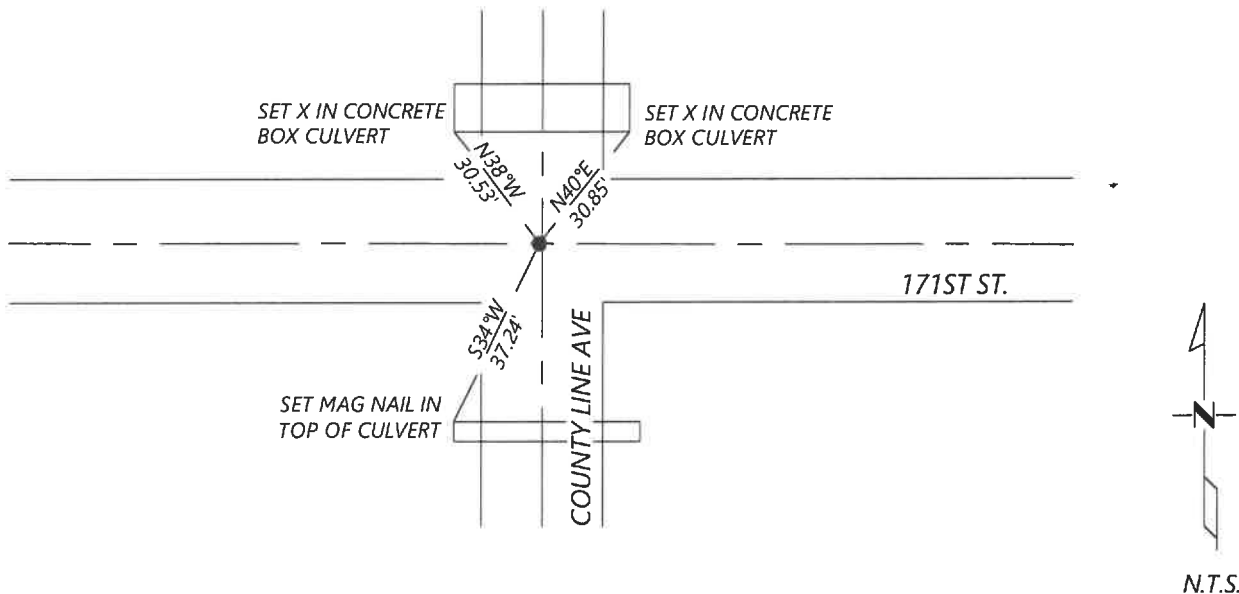
At the corner location shown on the sketch:

☒ On 11/29/2022 found a nothing.  
DATE

☐ left monument as found ☐ lowered monument ☐ removed monument (explain)

☒ On \_\_\_\_\_ placed a 1/2" rebar with cap 56488 .3' deep, along with 3 ties.  
DATE

## SKETCH OF REFERENCE TIES



Statement of evidence for this corner location is on back of this page.

I hereby certify that this document was researched and prepared by me or under my direct supervision and that I am a licensed Land Surveyor under the laws of the State of Minnesota.

Signature Kyle Brown

Date 12/29/2022 License No. 56488

Title:

☒ Land Surveyor ☐ Professional Engineer  
☐ County Surveyor ☐ County Engineer

## OFFICE OF THE COUNTY RECORDER

County of Murray

I hereby certify that this

document was filed in the Co.

**JAN 05 2023**

Recorder's office at \_\_\_\_\_ M. on the

\_\_\_\_\_ day of \_\_\_\_\_ A.D. 20 \_\_\_\_\_

County Recorder Karen Brown

by \_\_\_\_\_, Deputy

DOCUMENT NO. \_\_\_\_\_

KYLE JOHNSON  
Minnesota License No. 56488

**Statement of Evidence:**

Northwest Corner of Section 07, Township 107 North, Range 43 West, 5th Principal Meridian, Murray County, Minnesota.

*1861- GLO set a post, deposited charcoal, made mound of earth with trench and pits.*

*1958- DNR Survey file G-241X shows a found RR spike with a distance of 5290.0' to the NW12.*

*1995- Lyle Moseng, LS11943, filed a corner record stating he excavated and found a construction hub at intersection. set a 1" iron pipe with cap at occupational lines and notes 2 ties.*

*UNKN- County Coordinate map from Pipestone County notes a capped monument.*

*2005- Unrecorded Westwood survey data shows an iron pipe found.*

*2022- Westwood Professional Services searched the area and found nothing. Found 0 ties from previous record.*

*Reestablished the corner location using previous unrecorded survey by Westwood Professional Services. During a previous survey completed by Westwood Professional Services an iron pipe was found and accepted agreeing with the 1995 Moseng record. Set a 1/2" rebar with cap LS56488 and set 3 ties per previous survey. Position agrees with coordinates from County Coordinate Map*

Analysis of the recovered data, field evidence and survey measurements, indicates that the monument found is the correct perpetuation of this corner. For additional information concerning this corner please contact Westwood Professional Services.